



# An Update from the ADS

**Kieron Niven**  
**Digital Archivist, Archaeology Data Service**

28<sup>th</sup> March 2018

## Quick summary:

- Est.1996 at the University of York (22 years)
- Core aim: the long-term digital preservation and dissemination of data
- Development-led (commercial) fieldwork alongside RC and National Agency-funded archives
- Host OASIS, Scottish Radiocarbon Dating Recording Form, England's Rock Art...
- Partner in a number of EU projects past and present (ACE, CARARE, ARIADNE, NEARCH, ...)

## Current scale of ADS archive:

- c.1400 project archives
- Preservation data: 9.1TB
- Dissemination data: 1.3TB
- 74 archives released already this year
- Taking in more small archives via ADS-easy



## Smaller archives:

- Regular weekly release of smaller archives (report, images, spreadsheets, plans) via ADS-easy
- Occasional 'bulk release'
- e.g. BUFAU project – all born-digital material (CAD, GIS) and grey lit reports from 68 projects

**Birmingham Archaeology (BUFAU) Digital Archives**  
University of Birmingham, 2016

Homepage  
Archives  
All projects

Historic England

**Primary contact**  
Historic England  
1 Waterhouse Square  
138-142 Holborn  
London  
EC1N 2ST  
UK  
Tel: 01793 414700  
Fax: 01793 414707

[Send e-mail enquiry](#)

**Resource identifiers**  
ADS Collection: 1959

**Available archives:**  
A total of 68 archives are currently available.

<b>High Farm, Halton Holegate, Lincolnshire.</b> Project number: 811 Collection doi: <a href="https://doi.org/10.5284/1038413">https://doi.org/10.5284/1038413</a> Collection ID: 1002171
<b>River Sow Improvement Scheme, The Mill, Mill Bank, Stafford.</b> Project number: 947 Collection doi: <a href="https://doi.org/10.5284/1038422">https://doi.org/10.5284/1038422</a> Collection ID: 1002172
<b>Hawkesley Farm Moat, Longbridge, Birmingham: Archaeological Watching Brief.</b> Project number: 1141 Collection doi: <a href="https://doi.org/10.5284/1038411">https://doi.org/10.5284/1038411</a> Collection ID: 1002173
<b>Archaeological Assessment of Wood End Farm, Sutton Road, Walsall.</b> Project number: 1184 Collection doi: <a href="https://doi.org/10.5284/1038407">https://doi.org/10.5284/1038407</a> Collection ID: 1002174
<b>Shrewsbury Abbey, Abbey Foregate, Shrewsbury, Shropshire: An Archaeological Investigation 2004.</b> Project number: 1206 Collection doi: <a href="https://doi.org/10.5284/1038423">https://doi.org/10.5284/1038423</a> Collection ID: 1002175
<b>Old Police House, Rocester, Staffordshire: Archaeological Evaluation 2006.</b> Project number: 1480 Collection doi: <a href="https://doi.org/10.5284/1038430">https://doi.org/10.5284/1038430</a> Collection ID: 1002176
<b>Granary Wharf, Leeds: A Programme of Archaeological Investigations 2007.</b> Project number: 1551 Collection doi: <a href="https://doi.org/10.5284/1038410">https://doi.org/10.5284/1038410</a> Collection ID: 1002177
<b>Longdales Road, Kings Norton, Birmingham: An Archaeological Evaluation 2007.</b> Project number: 1552 Collection doi: <a href="https://doi.org/10.5284/1038419">https://doi.org/10.5284/1038419</a> Collection ID: 1002178
<b>Land at 22 Coten End, Warwick.</b> Project number: 1662

## Larger datasets:

- e.g. **Crossrail**.
- MOLA (21) and Oxford Archaeology (7) datasets.
- Well defined archives: Images, spreadsheets, GIS, reports.
- Deposit linked more closely to OASIS records (main reports in library)

## Larger datasets:

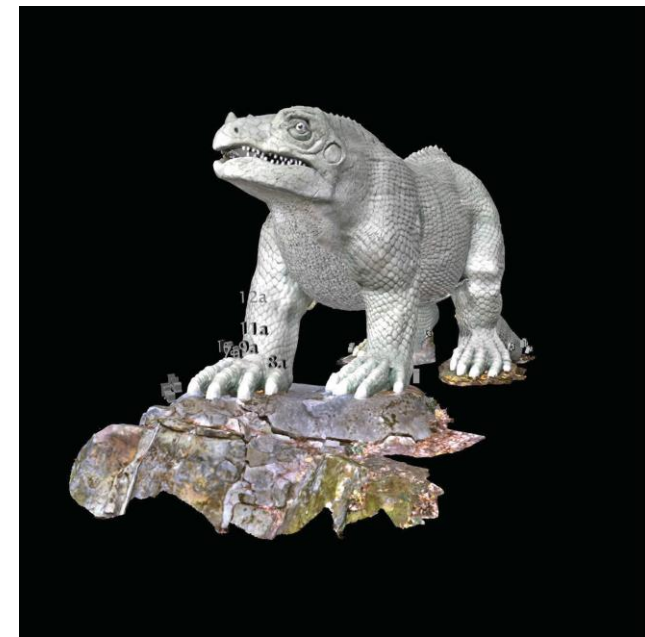
- worked closely with MOLA in run up to deposit, ensure we could reuse their existing registers to populate our metadata (avoid duplication)

The screenshot shows the ADS website interface. At the top is the ADS logo and navigation menu (HOME, SEARCH, DEPOSIT, RESEARCH, ADVICE, ABOUT, HELP). The main heading is 'Tottenham Court Road (Crossrail TCG09)' with the subtitle 'Museum of London Archaeology, 2017'. Below this are sections for 'Introduction', 'Downloads', 'Metadata', and 'Usage Statistics'. A 'Crossrail: Archaeological Investigations Conducted in Advance of Construction of the Elizabeth Line' project is mentioned. A copyright notice states 'Data copyright © Museum of London Archaeology, Crossrail Ltd unless otherwise stated'. The MOLA logo is displayed. The 'Primary contact' is Karen Thomas, Head of Archive at Museum of London Archaeology. On the right, there are links for 'Downloads' (Reports, Images, CAD, Spreadsheets, GIS) and 'Images' (Finds, Building Recording, Fieldwork). A 'Records 1 - 50 of 294' section shows a list of images with thumbnails, titles, and file sizes.

Image	Description	Format	Size
	View Of Internal Arch-Roofed Alcove [88], Looking East (049117002.jpg)	JPG	4.80 Mb
	View Of Stairway Addition [124], Looking South (049117003.jpg)	JPG	4.82 Mb
	Crosse And Blackwell Pottery Collection With Cistern [104] (049117004.jpg)	JPG	4.66 Mb

## Increase in no. of 3D datasets

- Largely using photogrammetry (in a variety of ways!)
- **ACCORD** project (10 sub proj)
  - 1-2 models per project
  - 40-700 images per model
- **Crystal Palace Iguanodon**
  - 87GB and 13,400+ images
- **ForSEAdiscovery**
  - 196GB and 12,000+ images



## Assessing how we disseminate these:

- Largely straightforward to archive (images)
- Issues with giving access to large no. of images (and in knowing how people want to access them, granularity of access vs. use)
  - ACCORD – gallery (not ideal)
  - CP Iguanodon – multizipped (requires all images to be downloaded in order to access 1)
  - ForSEAdiscovery – batch zip, ‘best of both worlds’



# ACCORD

## Photogrammetry - Bressay Manse Preview



Powered by 3DHOP

### 3D PDF Files (Using multi-volume ZIP files)

Bressay Manse 3D	ZIP 001	100 Mb
	ZIP 002	97 Mb

### 3D PDF Files (Using multi-volume ZIP files)

Bressay Manse 3D	ZIP 001	100 Mb
	ZIP 002	97 Mb

### OBJ files (Using multi-volume ZIP files)

Bressay Manse 3D	ZIP 001	100 Mb
	ZIP 002	46 Mb

### Photographs Records 1 - 50 of 756

Pages: 1 | 2 | 3 | 4 | 5 | 6 | 7 | 8 | 9 | 10 | > >>

	Bressay_PG_Manse_001.jpg	JPG	12.21 Mb
	Bressay_PG_Manse_002.jpg	JPG	11.56 Mb
	Bressay_PG_Manse_003.jpg	JPG	12.95 Mb

## Crystal Palace Iguanodon

### Downloads

Please select the part of the archive you wish to view from the list below:

- **Reports**  
Crack report and thesis by India Carpenter
- **Spreadsheets**  
Spreadsheets containing the crack data from 2016 and 2017
- **Photogrammetry**
  - **Photogrammetry metadata**  
Metadata associated with the photogrammetry files, including the files used for calibration
  - **3D Models**  
3D Models of the whole Iguanodon, the Iguanodon leg 2016 and the Iguanodon leg 2017
  - **Images**  
Images used to created the 3D models, divided into 10 sections
    - **A - Head and Neck**  
1692 images in 109 multi-volume ZIP files
    - **B - Body**  
1927 images in 136 multi-volume ZIP files
    - **C - Tail and Belly**  
1591 images in 48 multi-volume ZIP files
    - **D - Front Leg Left**  
1025 images in 68 multi-volume ZIP files
    - **E - Front Leg Right**  
661 images in 45 multi-volume ZIP files
    - **F - Back Leg Right**  
1411 images in 92 multi-volume ZIP files
    - **G - Back Leg Left**  
1057 images in 70 multi-volume ZIP files
    - **H - Plinth Front Feet**  
2856 images in 248 multi-volume ZIP files
    - **I - Plinth Back Feet**  
486 images in 38 multi-volume ZIP files
    - **J - Plinth Tail**  
703 images in 26 multi-volume ZIP files

### Downloads

#### A - Head and Neck

1692 images in 109 multi-volume ZIP files

[back to contents](#)

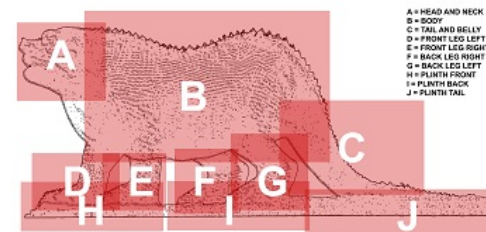
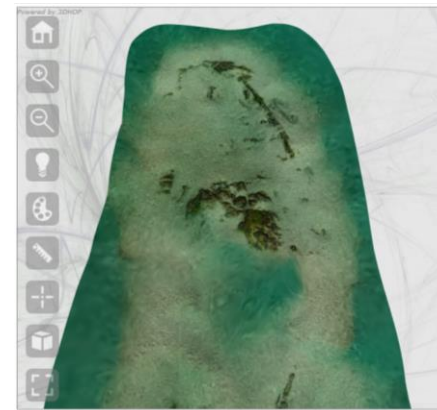


Image metadata (Image Group)	CSV	1 Kb
Iguanodon Body Plan	JPG	836 Kb
Image metadata (Head and Neck)	CSV	69 Kb

	001	100 Mb
	002	100 Mb
	003	100 Mb
	004	100 Mb
	005	100 Mb
	006	100 Mb
	007	100 Mb
	008	100 Mb
	009	100 Mb
	010	100 Mb
	011	100 Mb

## (Re)Assessing how we disseminate these:

- Online viewing (and basic manipulation) of models
- Increased use of Sketchfab – user expectations?
- 3DHOP - <http://vcg.isti.cnr.it/3dhop/>
- \* update \* have previously used a version since 2011 but have updated this within the recent ForSEA discovery project



## ForSEAdiscovery

Downloads

Photogrammetry

[back to photogrammetry](#)



### Metadata

Bayo Area1 ExifData	TXT	447 Kb
Bayo Area1 photogrammetry metadata	XLSX	25 Kb

### OBJ files

Bayo 04 obj	ZIP	24 Mb
-------------	-----	-------

### Source Images

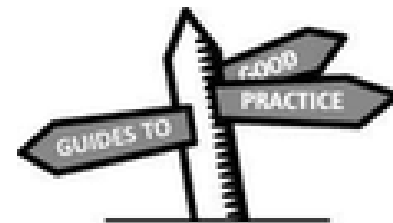
A-BAY01-10-06-2015-1-MS-C-P-001-018	ZIP	99 Mb
A-BAY01-10-06-2015-1-MS-C-P-019-034	ZIP	95 Mb
A-BAY01-10-06-2015-1-MS-C-P-035-050	ZIP	95 Mb
A-BAY01-10-06-2015-1-MS-C-P-051-067	ZIP	99 Mb
A-BAY01-10-06-2015-1-MS-C-P-068-083	ZIP	95 Mb
A-BAY01-10-06-2015-1-MS-C-P-084-098	ZIP	95 Mb
A-BAY01-10-06-2015-1-MS-C-P-099-113	ZIP	94 Mb
A-BAY01-10-06-2015-1-MS-C-P-114-128	ZIP	94 Mb
A-BAY01-10-06-2015-1-MS-C-P-129-144	ZIP	97 Mb
A-BAY01-10-06-2015-1-MS-C-P-145-160	ZIP	99 Mb
A-BAY01-10-06-2015-1-MS-C-P-161-175	ZIP	94 Mb
A-BAY01-10-06-2015-1-MS-C-P-176-191	ZIP	96 Mb
A-BAY01-10-06-2015-1-MS-C-P-192-207	ZIP	97 Mb
A-BAY01-10-06-2015-1-MS-C-P-208-225	ZIP	98 Mb
A-BAY01-10-06-2015-1-MS-C-P-226-243	ZIP	99 Mb
A-BAY01-10-06-2015-1-MS-C-P-244-261	ZIP	96 Mb
A-BAY01-10-06-2015-1-MS-C-P-262-278	ZIP	95 Mb
A-BAY01-10-06-2015-1-MS-C-P-279-296	ZIP	97 Mb
A-BAY01-10-06-2015-1-MS-C-P-297-315	ZIP	95 Mb
A-BAY01-10-06-2015-1-MS-C-P-316-333	ZIP	98 Mb
A-BAY01-10-06-2015-1-MS-C-P-334-350	ZIP	97 Mb

## Guides:

- Also actively working on ensuring that these datasets are properly preserved and documented
- Community Standards for 3D Data Preservation (CS3DP) - <http://gis.wustl.edu/dgs/cs3dp/>
- Update / merge of current G2GP 3D requirements with HE, HES, RCAHMW - “In train”



community standards  
for **3D data** preservation

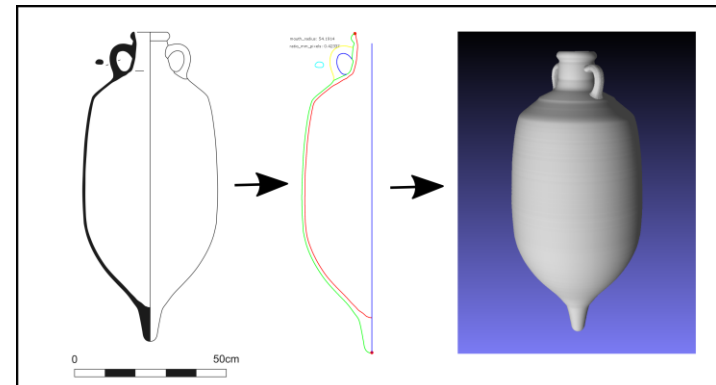
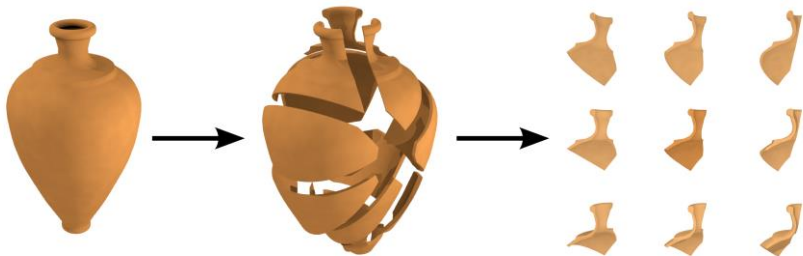


## OASIS / HERALD & Library / Grey Lit:

- OASIS becoming more integrated in our archives (ADS-easy archives linked file & metadata)
- HERALD project - Functional Specification available
  - <http://oasis.ac.uk/pages/wiki/Heralddownload>
- OASIS feeds into our Library (dev. of the GLL and BIAB). 45,531 reports available.
- New Library also far more automated.
  - New and updated journals: East Ang. Arch., JCAS, SAIR and PSAS updates

## Other projects:

- ArchAIDE (ARCHaeological Automatic Interpretation and Documentation of cEramics)
- EU Horizon 2020 research and innovation programme funded
- Aim: automatic recognition of archaeological pottery
- develop an app using the latest automatic image recognition technology to aid in the identification of ceramics.
- <http://www.archaide.eu/>



## Other and Upcoming EU projects:

Partners in two invited EU e-infrastructure proposals:

- UK lead & Deputy Coordinator for ARIADNEplus.
  - Cont. of ARIADNE, 40+ partners, extended scope to inc. archaeological sciences.
- Archaeological partner in SSHOC (Social Sciences and Humanities OpenCloud)
  - pulling together main e-infrastructures in those sectors (DARIAH, CESSDA, CLARIN, E-RIHS etc) and part of European Open Science Cloud.



**archaeologydataservice.ac.uk**

**kieron.niven@york.ac.uk**