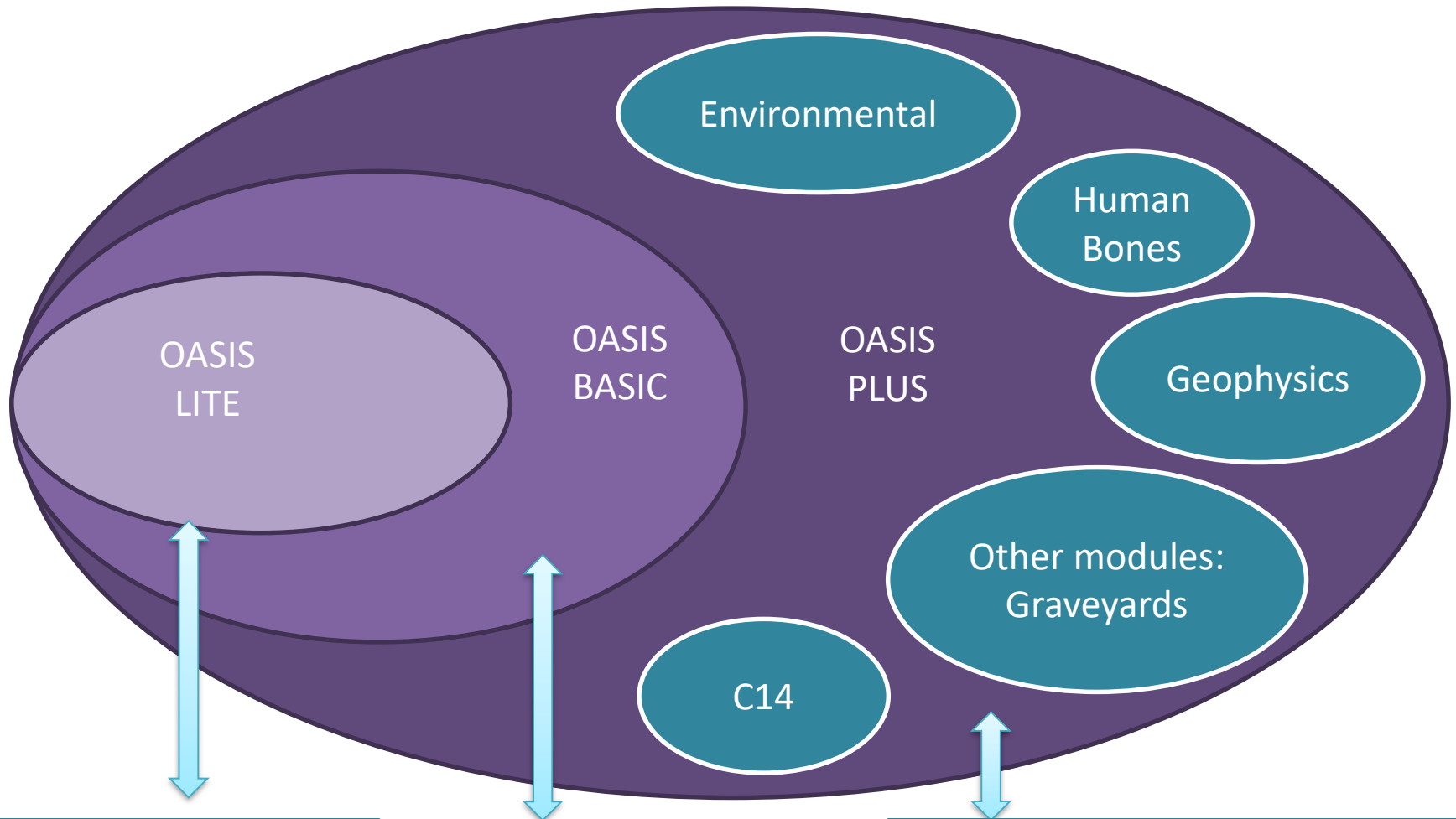


# OASIS

What will it do?

Records remain 'OPEN' with alerts when core fields are completed



Bibliographic record & Report uploaded by HERs or contractors

Constitutes a basic HER record

Creates a rich metadata record for specialist / project specific recording

# Bibliographic record

What

Where

When

Associated  
identifiers

Project  
name  
description  
event type

monument  
artefact  
ecofact

grid ref  
CDP

period

HER no.  
site code  
etc

museum  
accession  
no.

# General improvements

- Page / session timeouts
- Versioning
- Records 'always open'
- HERs can start records
- Individual vs organisation logins

# Types of user

- Level 1 - Archaeological contractors, building specialists, and other heritage professionals
- Level 1a - community groups, volunteers
- Level 2 - Historic Environment Records or similar
- Level 3 - Archive, Museum or records offices
- Level 4 - National bodies
- Level 5 – Specialist data consumers (DES, BABAO etc)
- Level 6 - Archaeology Data Service - administrative user

# Mocked up pages

OASIS+buildings – same functionality as main OASIS but different styling:

[OASIS+buildings mock up](#)

User profile page for HER user and organisation

## Organisation profile – Blankshire HER

### Areas covered by Blankshire HER:

Blankshire

[+] add / change area


### OASIS participation Level

Change the detail of the OASIS record you receive

**OASIS LITE**  **OASIS STANDARD**

### Hold records until checked

**Yes**  **No**

More information on participation levels 

### Members

An admin user can add members to an organisation

Anne Hero – admin user

Valerie Volunteer – normal user

[+] add / change members

This is where a LITE user defines whether they are approving records or not

[+] Update HER requirements (wiki page)

[+] View project tracking

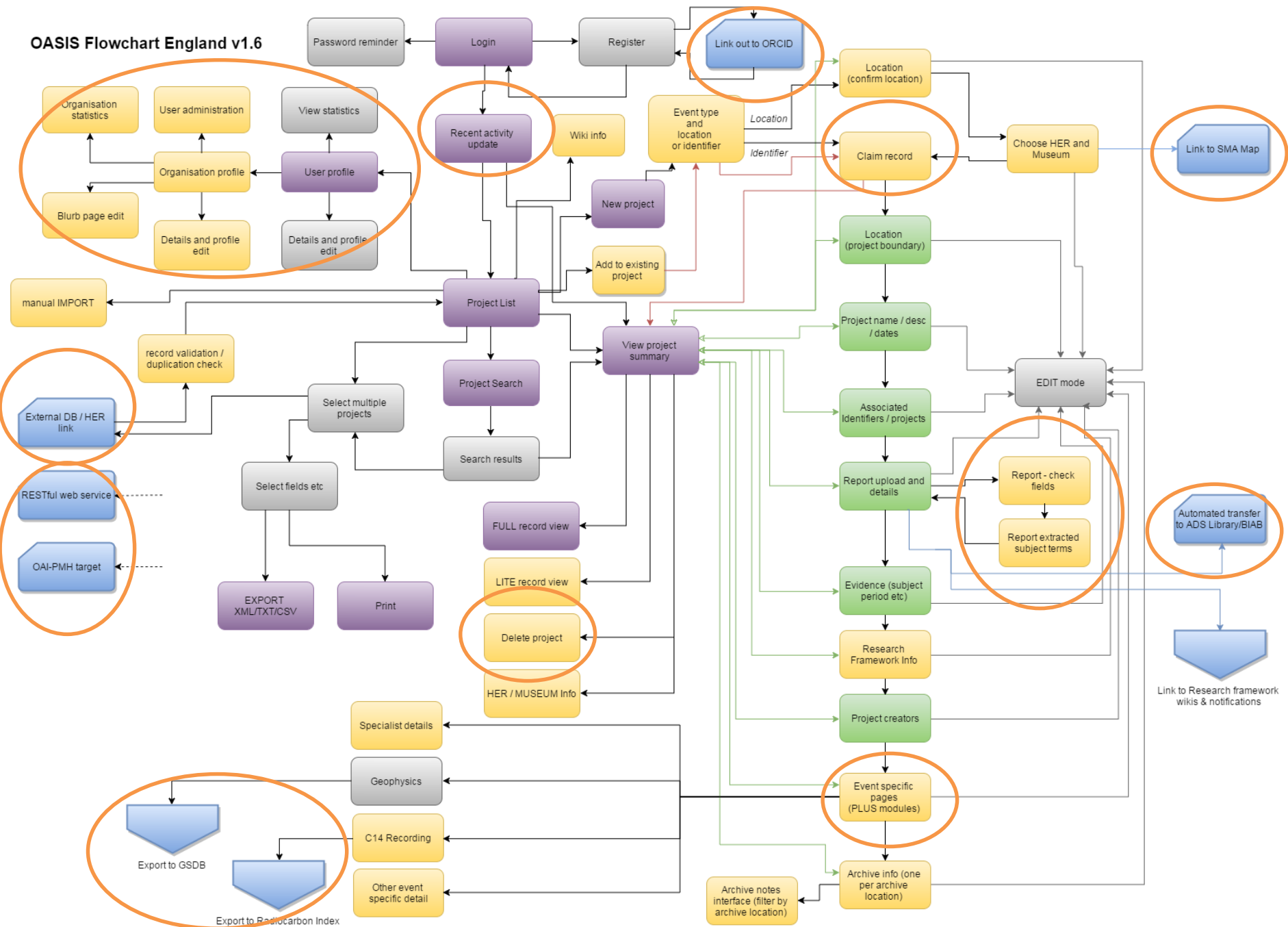
User profile page – this would allow a user to control their notifications and view their project completion statistics as well as changing name, address and password details.

This is where users could be associated with the HER and the level of authorisation defined.

This is also where the HER could set what type of OASIS records they are currently requesting (LITE or STANDARD) and the area they cover and whether they are approving records or not

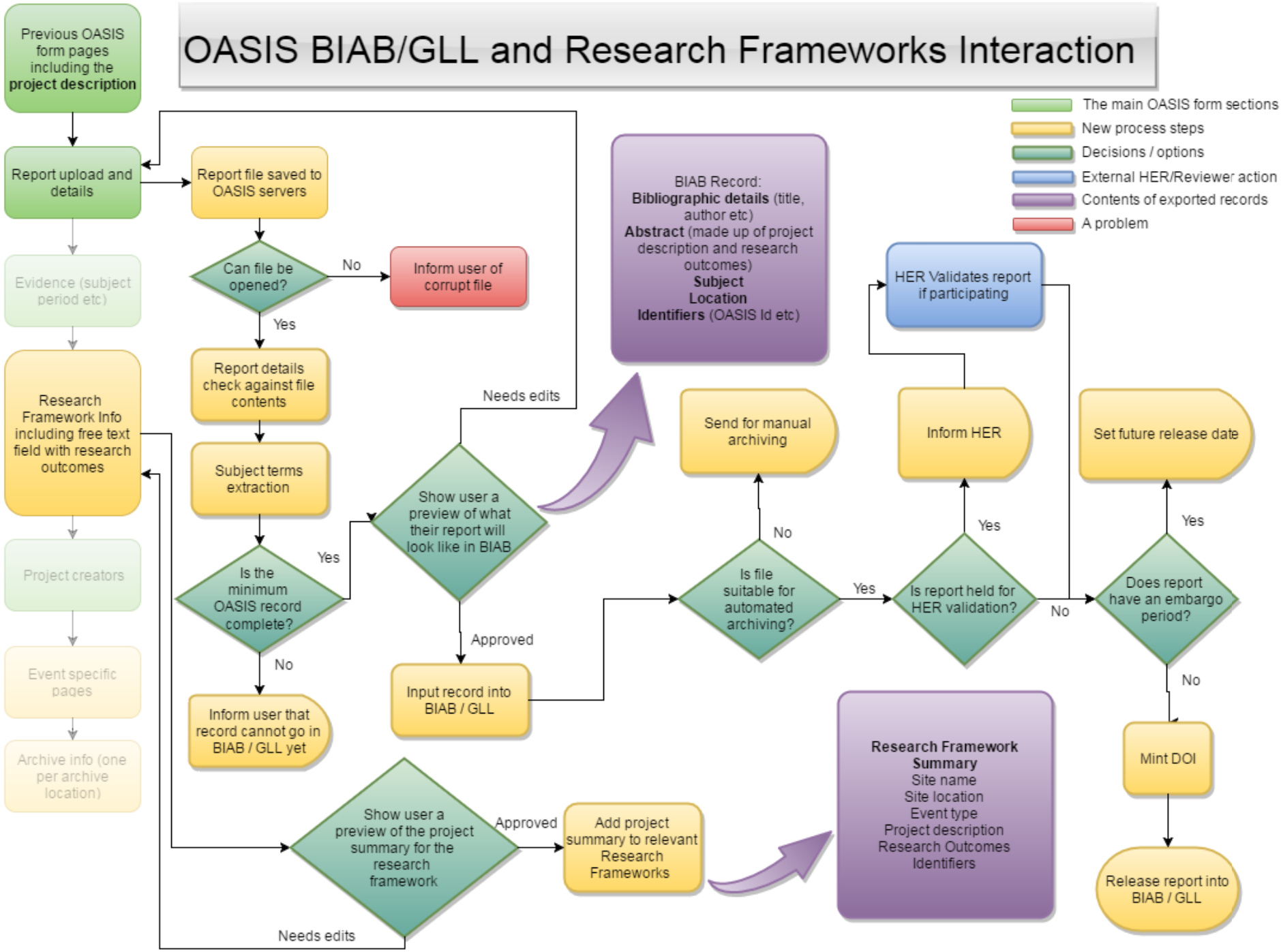


# OASIS Flowchart England v1.6



# OASIS BIAB/GLL and Research Frameworks Interaction

- The main OASIS form sections
- New process steps
- Decisions / options
- External HER/Reviewer action
- Contents of exported records
- A problem



# Other changes

- Export and import
- Synchronisation with HERs