

# What have the Romans ever done for us?



Digital strategies for bridging  
research syntheses and  
fieldwork reports

Tim Evans 07-03-2015

## The Rural Settlement of Roman Britain



- a comprehensive reassessment of the countryside of Roman Britain
- published reports and 'grey literature' reports
- funded by grants from the Leverhulme Trust  
English Heritage/Historic England

Phase 1 (April 2015) publishes the settlement evidence from Roman England. Subsequent phases will add Roman Wales (by December 2015) and the related finds, environmental and burial data (by 1st April 2017). These will be used alongside the specific site data in a series of integrative studies on rural settlement, economy, people and ritual to be published by the Society for the Promotion of Roman Studies as Britannia Monographs between 2016 and 2018.

# doi: digital object identifier

## Details of Document

### Bibliographic Reference and files

Ferris, I., Jones, A., Richardson, S., Sterenberg, S. (1991) Brompton, Shropshire Excavations 1990. Site narratives and Post-Excavation Research Design. Birmingham: Birmingham Archaeology , Report 155. doi: 10.5284/1026967

Click on a button to open a file, or right click and use file --> save as from your browser menu to save the file to your computer. Alternatively, if the report is available online, click on the link to open the resource in a new window:

GL30009.pdf PDF 2 Mb

<< display document details >>

### Site details

#### Location

**Site name** Brompton  
**Parish** CHIRBURY WITH BROMPTON  
**District** SHROPSHIRE  
**County** SHROPSHIRE  
**Country** ENGLAND  
**Grid reference** SO 24000 93000 (point)

#### Monuments and Finds

**DYKE (DEFENCE)** EARLY MEDIEVAL  
**FORT** ROMAN  
**VICUS** ROMAN

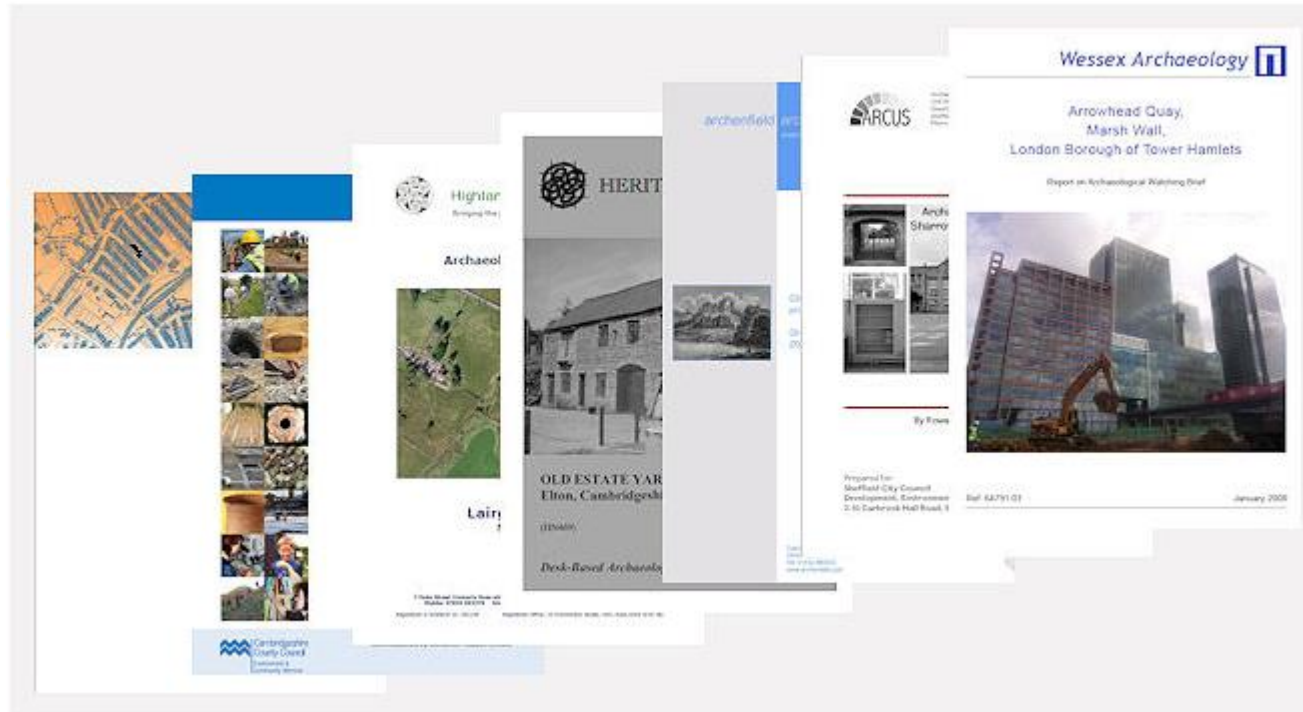
<http://dx.doi.org/10.5284/1026967>

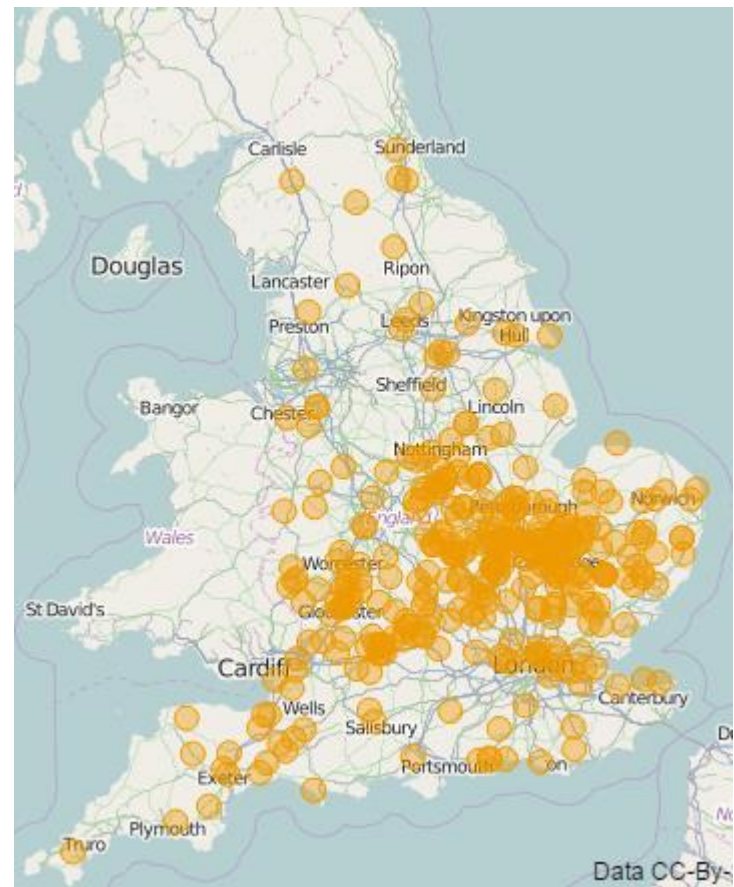
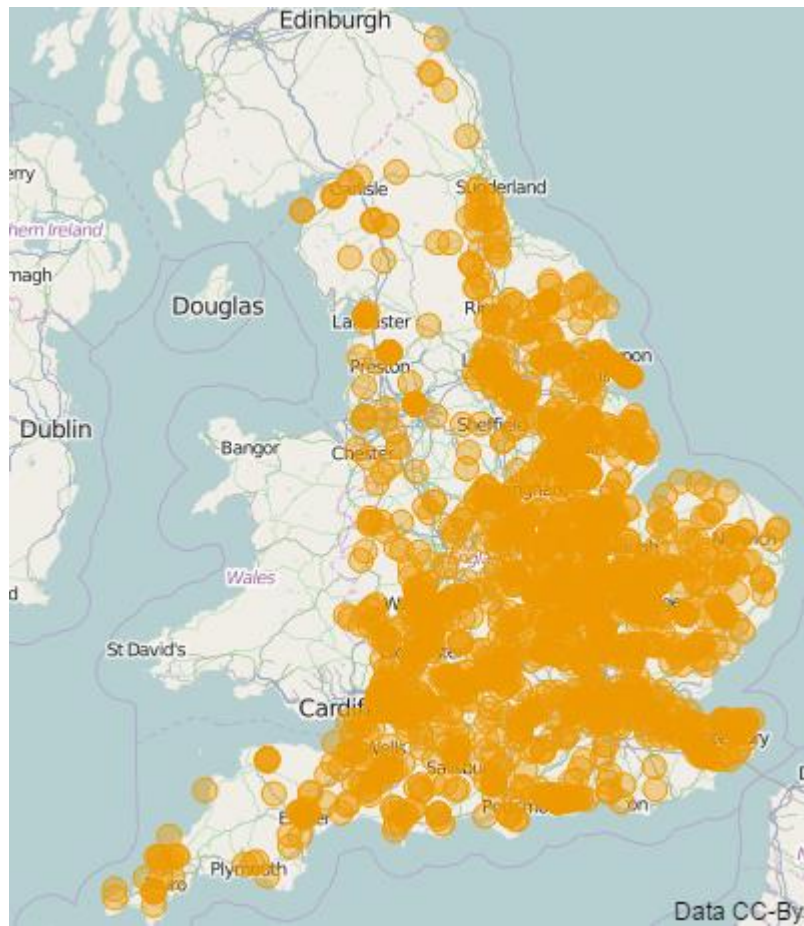
as opposed to...

<http://archaeologydataservice.ac.uk/archives/view/greylit/details.cfm?id=25456>

A search for all reports where PERIOD = ROMAN...

5363





County	Records	Reports used	Reports from OASIS	Percentage
Lincolnshire	206	168	7	4.2
Cambridgeshire	194	112	56	50.0
Kent	176	85	7	8.2
Gloucestershire	189	75	19	25.3
Wiltshire	148	58	12	20.7
Northumberland	42	57	0	0.0
Somerset	132	53	10	18.9
Oxfordshire	157	51	10	19.6
Leicestershire	73	50	19	38.0
Suffolk	77	49	29	59.2
Greater London	77	49	14	28.6
Hertfordshire	83	47	7	14.9
Northamptonshire	129	45	25	55.6
East Riding	73	44	2	4.5
Bedfordshire	91	43	16	37.2
Norfolk	92	43	12	27.9
Worcestershire	67	42	7	16.7
Hampshire	128	38	2	5.3
Essex	117	37	13	35.1
Warwickshire	66	35	3	8.6