

Discussion



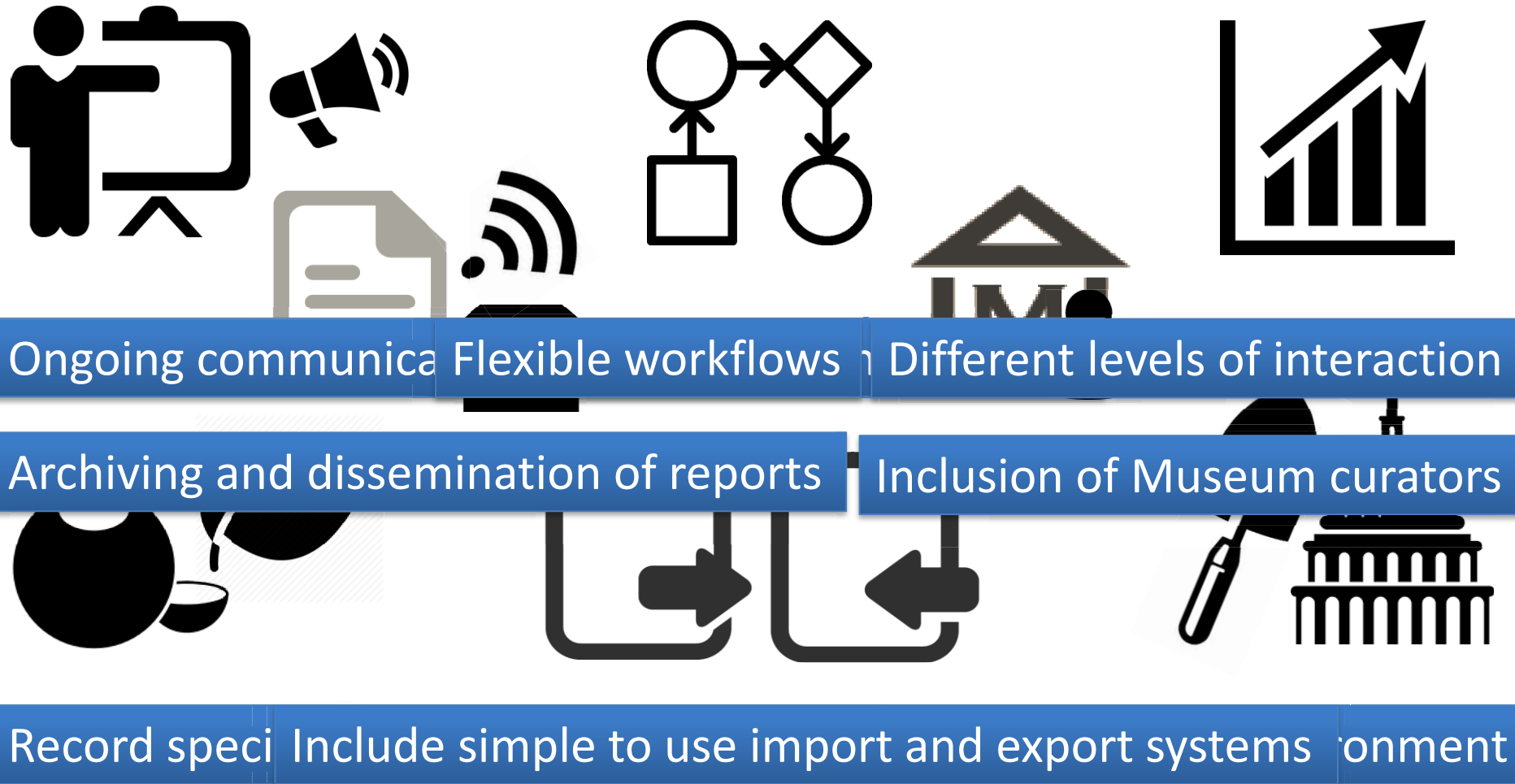
The HERALD Project

Louisa Matthews
Collections Development Manager

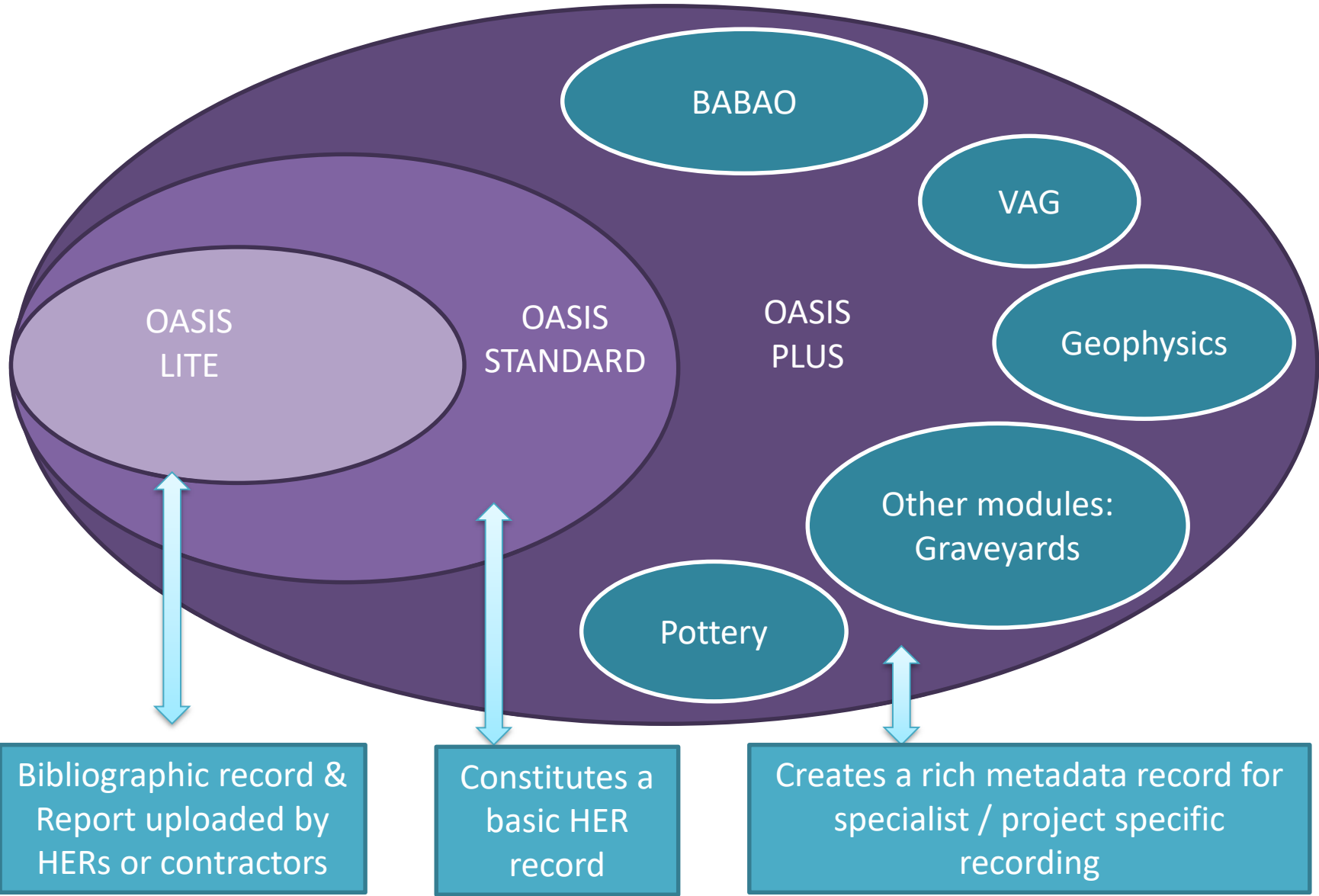
Where are we now?

- HERALD Stage 1 Report – March 2015
- BIAB Stage 1 Report – September 2015
- DES-OASIS Project Grant Application – Sept 2015 (from April 2016 if successful)
- HERALD Stage 2 Project Design inc. BIAB – November 2015
- OASIS Redevelopment 2016 onwards

What the survey told us - things to bear in mind



Records remain 'OPEN' with alerts when core fields are completed



Work Package Tasks Completed

- Museums workshop has captured the needs of the community
- AMIE assessed for building terms
- Specialists within HE and beyond identified for consultation on historic building and landscapes recording

Work Package Questions Outstanding

Will OASIS allow automated report upload?

Options:

- 1. Continue status quo with proxy sign-off from Historic England
- 2. Automated release (recommended option)

In option 2, the following are proposed:

- 1. Non-reviewing HERs - reports are released directly into BIAB (marked as un-reviewed)
- 2. HER which is reviewing records/reports - reports are released into BIAB once reviewed. If the reports are not reviewed within a period of time (i.e. one month) then they are released into BIAB (but marked as un-reviewed).
- If so, what should the period be? How should these reports be 'flagged'?

Work Package Questions Outstanding

- When should OASISLite be used and what are the minimum requirements?

<p>OASIS unique id</p> <p>Project Details Project name Short description of project Project dates Any associated project reference codes (HER id) Type of project - event type (Event type thesaurus) Monument type (From thesaurus of monument types) Artefact (From FISH objects thesaurus) Period</p> <p>Archive location?</p>	<p>Site location Site name National grid reference County, district, parish (generated from grid reference)</p> <p>Report details Title Author(s)/Editor(s) Report Number etc. (other bibliographic details) Date Issuer or publisher Place of issue or publication</p>
--	--

Work Package Questions Outstanding

- Claiming HER-created records. Options for contractor record 'fetch'

Scenario 1:

HER starts record

HER emails contractor with OASIS ID/HER no. (*potential disconnect see issue 1 below*)

Fieldworker logs into OASIS

Fieldworker enters OASIS id/HER No and claims record.

Scenario 2:

HER starts record

Fieldworker logs into OASIS

Fieldworker enters grid reference/location information for the project

Fieldworker is shown basic details of unclaimed records in that area (will potentially see location and type of competitors' records *see issue 2 below*)

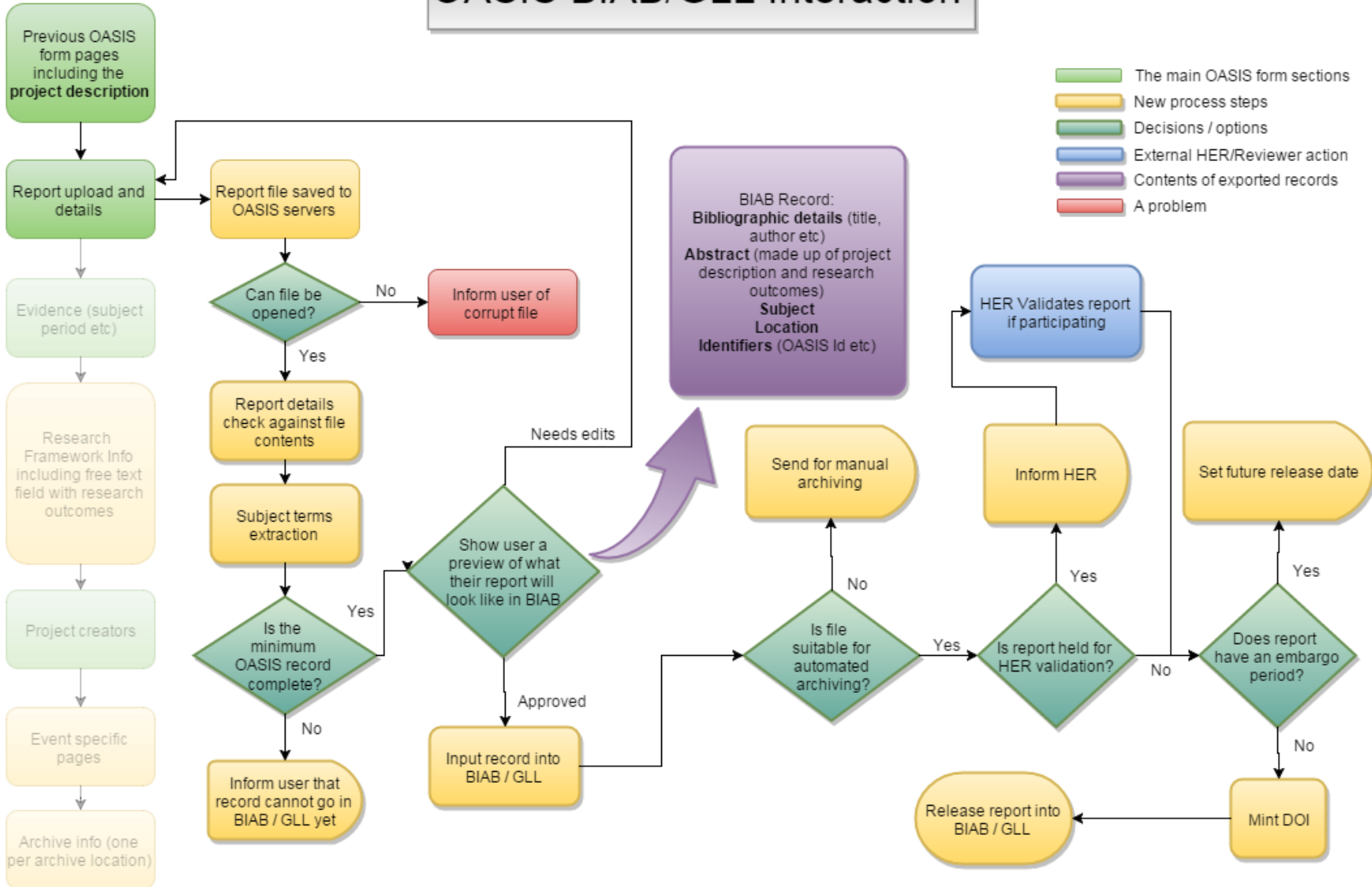
Fieldworker claims record

Work Package Questions Outstanding

- Historic Buildings and Structures
 - Should they have a separate 'module'?
 - Does the proposed content cover the information required?
- Research Frameworks (England)
 - Wiki technologies and resource assessments

OASIS BIAB/GLL Interaction

- The main OASIS form sections
- New process steps
- Decisions / options
- External HER/Reviewer action
- Contents of exported records
- A problem



Stage 3?

- Data synchronisation
- Outreach for new audiences?

What's next?

- Draft Project Design to the OASIS Management Board (22nd October)
- Revisions as necessary
- Submission of HERALD Project Design to Historic England in late November.